

# New York by Gehry







New York by Gehry seen from Brooklyn

## building

At 870 feet tall, New York by Gehry is the tallest residential tower in the Western Hemisphere and an inspired addition to the iconic Manhattan skyline. For his first residential commission in New York City, master architect Frank Gehry has modernized the design language of the classic Manhattan high-rise and carried his distinctive aesthetic throughout the building's interior residential and amenity spaces.

It was Gehry's innovative approach to the incorporation of bay windows that created the building's dynamic silhouette and an exceptional variety of panoramic views from its residences. By shifting the bay windows from floor-to-floor and tailoring their configuration for each residence, Gehry has given residents the opportunity to, as he puts it, "step into space." The exterior impact of the bay window design solution is that the building appears to be draped in fabric, an effect accentuated in Gehry's shaping of the façade's stainless steel cladding. In addition to providing sculptural intrigue, the vertical arcs of bay windows reflect the changing light, transforming the appearance of the building throughout the day.



porte cochère between Spruce and Beekman Streets

Two plazas totaling 15,000 square feet will offer serene and pastoral transitions between New York by Gehry and the surrounding urban fabric. Designed by Field Operations, the creative force behind New York City's High Line, and Piet Oudouff, the horticulturist who collaborated with Gehry on the design of Chicago's Millennium Park, the plazas will feature intimate seating arrangements set within a landscape of native grasses, perennials, and a layered mass of light-filtering canopy trees. These urban oases will be enhanced by sculptural elements covered in vines, lighted planters, and animated water features.



photo of kitchen interior



view of façade

Set just north of Manhattan's Financial District near the Brooklyn Bridge, New York by Gehry is located at the center of a variety of dynamic neighborhoods, including Tribeca, Chinatown, and the South Street Seaport. A dozen nearby subway lines provide easy access to all areas of New York City.

## residences

Gehry's design resulted in over 200 unique floor plans that bring the drama of the dynamic exterior wall movement into residents' private spaces. Where the façade undulates, the residential windows also move into the apex of the folds, creating free-form bay windows that are fitted with seating or left open to accommodate dining or reading niches. All interior finishes and fixtures have been selected by Gehry, including cabinetry crafted in his signature honey-colored vertical grain Douglas Fir. In addition, Gehry designed sculptural residential entry door handles and hardware exclusively for New York by Gehry inspired by organic forms and movement. All residences are finished with white oak flooring, fitted with solar shades that offer privacy while preserving views, and outfitted with stainless steel appliances and individual washer/dryer units. Building-wide features include water filtration, individually controlled vertical heating and cooling units, and large picture windows throughout to maximize views.



custom-designed hardware by Frank Gehry



apartment interior, northeast view



Frank Gehry

## architect

Frank Gehry is perhaps the most celebrated practicing architect in the world today. He has been the recipient of dozens of awards recognizing excellence in architecture, including, in 1989, the most prestigious one in his field, the Pritzker Architecture Prize, which honors "significant contributions to humanity and the built environment through the art of architecture." Gehry's commissions, including The Guggenheim Museum Bilbao in Bilbao, Spain, the Walt Disney Concert Hall in Los Angeles, and the Nationale-Nederlanden Building in Prague, Czech Republic (known as "The Dancing House"), instantly raise the profile of the cities in which they are located. New York by Gehry, which was commissioned by Forest City Ratner Companies, is Gehry's second project in New York City; his first, completed in 2007, is the Inter-Active Corporation (IAC) Headquarters, located in Manhattan's West Chelsea neighborhood. Gehry's IAC has been credited with attracting other exceptional architects to residential and commercial projects in this dynamically evolving area.

Over the past five decades, under Gehry's creative direction, Gehry Partners, LLP has designed public and private buildings in North America, Europe, and Asia. Hallmarks of Gehry's work include a particular focus on creating spaces that are comfortable to the people who use them, and that exist well within the larger context and culture of their location. The firm's approach to design is one in which the client becomes fully engaged in the process, making each project a true collaboration.



Walt Disney Concert Hall



view of New York by Gehry with Woolworth Building

## views

New York by Gehry is a transformative and singularly identifiable addition to the New York skyline that greets travelers as they land at regional airports and arrive via bridges across the Hudson and East Rivers. Views from every perspective and each floor, at all times of the day and throughout the year, are limitless. Intimate perspectives of the Woolworth Building to the west are set against a breathtaking panorama that encompasses the Hudson River's piers and parks. All five East River bridges and iconic midtown skyscrapers, including the Empire State and Chrysler buildings, unfold in front of the eastern and northern exposures. Views toward the northern horizon include Central Park and the George Washington Bridge. To the south and east, Manhattan is seen against the backdrop of the New York Harbor and the Atlantic Ocean.



east view from 52nd floor terrace

## amenities

Residents enter New York by Gehry via a porte cochère between Spruce and Beekman Streets that fronts an 11,500 square-foot plaza. In the lobby, a custom Frank Gehry designed sculptural concierge desk resonates with the fluidity of the building's architectural style and complements the lobby's honey-colored vertical grain Douglas Fir walls.



drawing room with grand piano

Throughout the 6th, 7th, and 8th floors, residents have exclusive access to 22,000 square feet of indoor and outdoor health, wellness, social, and entertainment amenity spaces. These amenities, together with an extensive range of concierge and lifestyle services, offer residents an experience found only in world-class hotels and resorts.

On the southern side of the 6th floor the Grilling Terrace is outfitted with dining cabanas with picnic tables, café seating, and grills. From this terrace residents will enjoy stunning views of Cass Gilbert's classic Woolworth building. The adjacent Game Room is furnished with custom designed seating by Gehry. On the 7th floor a 50-foot pool is set within a skylit space surrounded by a series of glass doors that retract fully, creating a seamless expanse of indoor and outdoor spaces from the pool to the wraparound sundeck. Overlooking City Hall Park to the north, a large Drawing Room with multiple seating areas and a grand piano is located adjacent to a Private Dining Room. Both can be reserved for residents' events, which can be serviced from a Chef's Demonstration and Catering Kitchen. A 3,300 square-foot state-of-the-art Fitness Center with a view of the Brooklyn Bridge and a Spa Treatment Suite are also located on the 7th floor. The 8th floor offers Group Fitness, Pilates, and Private Training Studios, a Library with a well-curated selection of books and periodicals, a Tween's Den, a Children's Playroom, and a Screening Room with Gehry-designed amphitheatre seating that is also available for private events.

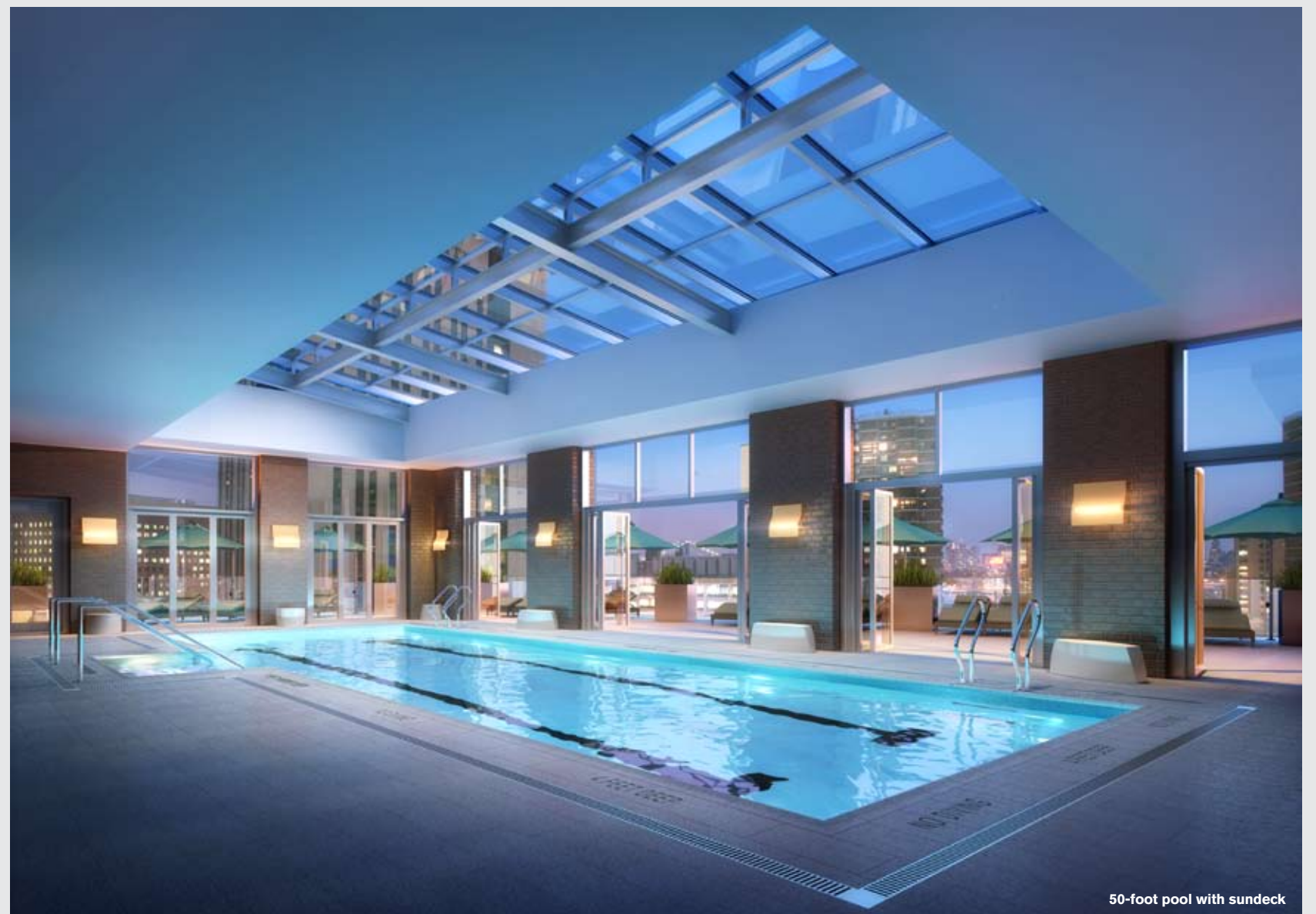
- 15,000 Square Feet of Landscaped Plazas
- Porte Cochère - A Private Driveway to the Lobby

- 6th Floor**
- Grilling Terrace with Dining Cabanas
- Game Room

- 7th Floor**
- Skylit 50-foot Pool with Sundeck
- 3,300 Square-Foot Fitness Center
- Spa Suite with Private Treatment Rooms

- 7th Floor (continued)**
- Chef's Demonstration and Catering Kitchen
- Private Dining Room
- Drawing Room with Grand Piano and Multiple Seating Areas

- 8th Floor**
- 1,200 Square-Foot Group Fitness Studio
- Yoga & Pilates Studio
- Private Training Studio
- Screening Room
- Library
- Children's Playroom
- Tween's Den



50-foot pool with sundeck