

THE MANHATTAN CLUB

THE MANHATTAN CLUB, LOCATED ON THE ROOF GARDEN LEVEL, IS NOW OPEN FOR RESIDENTS OF MANHATTAN HOUSE.



The private library, lounge and landscaped terrace offer panoramic views of the Manhattan skyline. The club is equipped with a state-of-the-art sound system, two flat screen televisions and wireless Internet

service. The comfortably furnished library provides a quiet place to relax, read a book or socialize with your neighbors. Manhattan Club members enjoy coffee and periodical service, making mornings convenient.

The Manhattan Club is equipped with a warming kitchen and bar, and is available for private events.

HOURS OF OPERATION: Daily from 5AM to 12AM

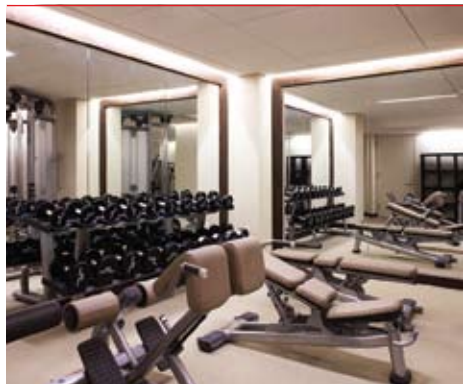
EXHALE FITNESS

EXHALE, THE HIGHLY ACCLAIMED TRANSFORMATIONAL MIND BODY SPA, RECENTLY OPENED ITS FIRST RESIDENTIAL FITNESS CENTER AT MANHATTAN HOUSE.

The fitness center offers top-of-the-line equipment and technology. Unique programs, exhale®-trained instructors and the highest quality customized services are also available by appointment through exhale. Life Fitness, the world leader in commercial and home fitness equipment, was selected by exhale to equip the fitness center. The cardiovascular machines include Life Fitness elliptical cross-trainers as well as various exercise bicycles and treadmills. All of the cardiovascular equipment features the latest technology, including 15" LCD screens, iPod integration, USB compatibility and a Virtual Trainer. These features record workout programs and personal settings;

track performance and workout results; and, provide encouraging motivation and feedback on progress. The fitness center also features a full line of Pro2 Series strength training equipment and a Kinesis Personal Vision wellness machine, offering a unique "full-gravity" workout inspired by nature that works to improve endurance, balance, strength and flexibility. The fitness center is accessible to Manhattan Club members with an electronic key.

HOURS OF OPERATION: Daily from 5AM to 12AM
Please visit www.exhalespa.com to learn more about exhale®



MANHATTAN HOUSE

NEWSLETTER SUMMER 2009



NEW SCULPTURES

WE ARE PLEASED TO ANNOUNCE THE ARRIVAL OF TWO SIGNIFICANT HANS VAN DE BOVENKAMP SCULPTURES, *TRINITY* AND *RED GATEWAY*, WHICH ANIMATE MANHATTAN HOUSE'S GARDENS.

Hans Van de Bovenkamp, a well-established Dutch-born sculptor, is an affirmed Modernist with a particular affection for architect Gordon Bunshaft and Manhattan House. Over the past 45 years, he has completed more than 100 major commissions for museums, civic organizations, corporations and private collectors. From his lyrical studio and farm in Sagaponack, New York, Van de Bovenkamp begins with drawings inspired by extensive travels and studies of ancient cultures, then transforms these visions into

"IN CREATING A LARGE SCULPTURE, I FOCUS ON ITS INTERACTION WITH THE ENTIRE OUTDOORS, THE RELATIONSHIP, THE BRIDGE BETWEEN ARCHITECTURE AND NATURE. SCULPTURE IS A LANDMARK. IT IS A WINDOW TO INTROSPECTION."

—HANS VAN DE BOVENKAMP

bronze and stainless steel sculptures that create a dialogue between people, architecture and nature. The two pieces acquired for the private gardens of Manhattan House will engage the neighborhood, stimulate the glass-enclosed lobby and add a cultural dimension to the experience of the garden, whether viewed from the residences above or within the garden itself.

Please visit www.vandebovenkamp.com to learn more about the artist

PROGRESS TIMELINE

MAY

GARDENS

- Two sculptures installed
- Plantings completed

INFRASTRUCTURE

- Five new boilers installed and completed

ROOF WORK

- Bulkheads on A, B & C towers completed
- Flashing completed around the Manhattan Club and exhale® spa space
- New terrace pavers installed

JUNE

CHILDREN'S PLAYROOM

Hours of operation: Daily from 8AM to 8PM

- Includes electronic full-size giraffe height checker, interactive train table, spaceship and soft play area

EXHALE FITNESS CENTER

Hours of operation: Daily from 5AM to 12AM

- Equipped with Life Fitness strength and cardio equipment and Kinesis wall

MANHATTAN CLUB

Hours of operation: Daily from 5AM to 12AM

- New terrace furniture
- New interior furniture

PORTE-COCHÈRE WEST

- New pavers, driveway, sidewalks and granite curbs
- New landscaping
- New exterior lighting

VALET SERVICES REOPEN

Hours of operation:

Weekdays from 7AM to 8PM

Saturdays from 9AM to 5PM

Sundays from 10AM to 4PM

LATE SUMMER/EARLY FALL

EXHALE MIND BODY SPA

- Yoga studio and treatment room in the solarium on the roof garden level

CORRIDOR RENOVATION

- Ongoing through the fall

PORTE-COCHÈRE EAST

- Beginning middle of summer, finished by the fall

MANHATTAN HOUSE

200 EAST 66TH STREET

PRESIDENT'S LETTER

It is my pleasure to welcome our new residents, who have been moving in since last fall, to Manhattan House. This is the first edition of our quarterly newsletter.

The transformation of Manhattan House has advanced considerably and I wanted to bring you up to date on the progress we have made this spring with the renovation and marketing of Manhattan House. I would also like to offer you a preview of our upcoming plans and available services.

As noted in the Progress Timeline, several Manhattan House amenities are now open and available to residents. Designed by Sasaki & Associates, the private gardens of Manhattan House have recently been completed with the planting of hundreds of new bushes, trees and flowering shrubs. You will also notice intriguing additions to the landscaping; *Trinity* and *Red Gateway*, two sculptures created by New York artist Hans Van de Bovenkamp. The much lauded Children's Playroom, exhale® fitness center and newly furnished Manhattan Club are now open. The renovation of the west porte-cochère was recently completed and valet parking will soon be available.

New model residences are also ready for viewing. The award-winning designer Patrik Lönn, whose sophisticated aesthetic sensibilities resonate with Manhattan House's Modernist heritage, has designed their interiors. Lönn's interiors are understated, elegant and exceptionally well executed.

We hope you have had the opportunity to meet Manhattan House's new sales team from the highly regarded Corcoran Sunshine Marketing Group. Their on-site sales office is in Suite B1004. Please feel free to stop by or call for up-to-the-minute information about all of Manhattan House's services and amenities or to view one of the newly furnished model residences.

I hope you enjoy all that Manhattan House has to offer. As always your Manhattan House Development team is available for any questions – please feel free to stop by or call. My best wishes for a very enjoyable summer season.

Brian Fallon
President, Manhattan House

Manhattan House is a development of O'CONNOR | CAPITAL PARTNERS
Please visit www.oconnorcp.com to learn more about O'Connor Capital Partners



CHILDREN'S PLAYROOM

THE MUCH-ANTICIPATED CHILDREN'S PLAYROOM IS NOW OPEN!

Crafted by Roto Studio, the design team behind the award-winning Children's Museum of New York, the children's playroom consists of over 1,000 square feet of open space for children to roam through and explore in a safe and stimulating environment. Brightly colored decorated walls, toys, train sets, a spaceship and plush mats all inspire and entertain young children for hours. A highlight is the speaking giraffe, which measures our visitors' heights. Look out – she even jokes! Located on the lobby level across from the D Tower, the playroom is accessible to Manhattan Club members with an electronic key. The children's playroom is also available for private children's parties.

HOURS OF OPERATION: Daily from 8AM to 8PM
Please visit www.rotostudio.com to learn more about Roto Studio

MANHATTAN HOUSE CONCIERGE EILEEN MCGILL

Over the past decade as a concierge for luxury hotels and residences, Manhattan House's in-house concierge, Eileen McGill, has assisted clients with a wide array of requests. Requests have ranged from the esoteric (overseeing the disassembly, transport, reassembly and calibration of a treasured grandfather clock) to the impulsive (shipping authentic American barbecue sauce to a Middle Eastern country) to the urgent (a French-speaking babysitter in less than 3 hours, s'il vous plait) to the very urgent (passport renewal in 48 hours). "While the list of services an accomplished concierge

can provide is typically comprehensive," says Ms. McGill, "in truth it is only limited by the imagination and very particular needs of each client on any given day." You may contact Ms. McGill at (212) 838-0103 (house phone, extension 160) or by e-mail at Eileen.McGill@ellimanpm.com for information about the services available. Of course, you are invited to customize this list as personal and business needs arise in your daily life.

HOURS OF OPERATION: Weekdays from 9AM to 5PM
After hours & weekends available by e-mail



CORCORAN SUNSHINE

IN FEBRUARY MANHATTAN HOUSE WELCOMED THE CORCORAN SUNSHINE MARKETING GROUP AS OUR NEW SALES TEAM.



Led by Anne Young, Senior Managing Director of CSMG, the team has already initiated a new marketing campaign with advertisements in high-profile publications and the launch of our new web site at www.manhattanhouse.com. We invite you to visit CSMG's onsite office in Suite B1004.

CONTACT INFORMATION:
The Manhattan House Sales Team
212 566 0660 • www.manhattanhouse.com

Corcoran Sunshine team pictured from left: Anne Young, Senior Managing Director; Melanie Warner, Sales Associate; Nicole Trazzera, Senior Sales Associate; JP Forbes, Senior Sales Associate.

HOURS OF OPERATION:
Weekdays from 10AM to 6PM
Weekends from 11AM to 5PM