



MANHATTAN VIEW

MiMA



MANHATTAN VIEW

MiMA





Set within the top 13 floors of a sleek 63-story glass tower by award-winning architecture firm Arquitectonica, the residences of Manhattan View are the jewels in the crown of a spectacular mixed-use property offering The Signature Theatre by Pritzker Prize-winning architect Frank Gehry as well as retail and other lifestyle amenities.

THE BUILDING



IMAGE CAPTION

THE BUILDING

Soaring high above the vibrant heart of New York City and surrounded by a breathtaking panorama of iconic views, Manhattan View sets a new standard in luxurious cosmopolitan living. From sophisticated residential interiors by internationally renowned designer Jamie Drake to 44,000 square feet of exclusive indoor and outdoor amenities, the tower offers the ultimate in style and convenience.



IMAGE CAPTION

Brilliant Tower Design

Residents of Manhattan View are welcomed home in a beautifully appointed private lobby designed by Jamie Drake that is staffed 24/7 with doormen. In addition, a dedicated concierge is available to assist with every personal need. Biometric access control systems in some amenity spaces and mobile device-controlled smart home systems are among the state-of-the-art technologies found throughout this LEED Gold Certified tower.



The acclaimed design team assembled for Manhattan View has created an oasis of contemporary glamour for residents. From the elegant private entry lobby and expansive amenity spaces to the luminous residential interiors, their vision comes to life through exotic natural materials, rich decorative accents, and refined custom craftsmanship.

DESIGN

JAMIE DRAKE

[Lobby & Residences]

New York-based designer Jamie Drake believes that the best décor expresses personality and place. Known as “The King of Color”, he is renowned not only for his exuberant sense of color, but also his eye for the unique and telling detail, his practical approach to planning, and his equal facility in traditional and modern styles. The result is inviting, delightful, and resolutely livable environments.

Since launching Drake Design Associates more than 30 years ago, he has completed countless interiors for an impressive roster of clients and was named to Architectural Digest’s prestigious AD100 list in 2014. Notable residences he has designed include a Los Angeles showplace for Madonna, apartments in the Dakota and other historic New York landmark buildings, and multiple projects for longtime client, former New York City Mayor, Michael Bloomberg.

Nothing if not prolific, Drake has master-minded rug collections for Roubini and Safavieh, a furniture line for Lewis Mittman, bathroom fixtures for THG, fabrics for Schumacher, sinks for Elkay, bath accessories for Labrazel, light fixtures for Boyd Lighting, and he has recently collaborated with Theodore Alexander for a furniture line.

Drake’s projects have enlivened the pages of Architectural Digest, Elle Decor, French Architectural Digest, House Beautiful, The New York Times, British House & Garden, Hotel Design, Hospitality Design, Veranda, and Interior Design. His numerous industry honors include Interior Design Magazine’s Interior Design Hall of Fame.

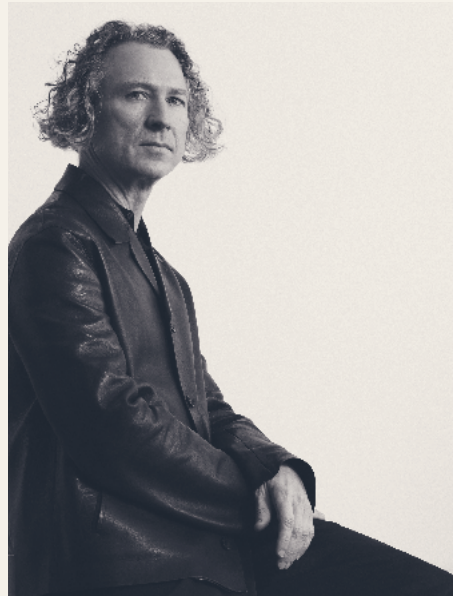


JAMIE DRAKE

FPO

MICHAEL GABELLINI, FAIA

[Model Apartment]



MICHAEL GABELLINI

Michael Gabellini is a co-founder of Gabellini Sheppard Associates, a multi-disciplinary architectural and interior design firm based in New York City. Working with space and light as sculptural materials, Gabellini constructs architectural settings that are at once elemental in form and dramatic in their purity of means. He and his firm redecorated Manhattan's iconic Rainbow Room and have designed spaces for fashion legends including Jil Sander, Giorgio Armani, Salvatore Ferragamo, Vera Wang, and Gianfranco Ferre, and his expertise in contemporary art has led to commissions by numerous galleries and museums including the Solomon R. Guggenheim Museum and the Cooper-Hewitt National Design Museum. Gabellini received the 2006 National Design Award in Interior Design from the Smithsonian Cooper-Hewitt National Design Museum and he was previously inducted into the Interior Design Hall of Fame.



RAINBOW ROOM

Furniture Package

Quatio et undaerios sitaquis doluptur ma dolore, iniminti volorum abo. Neque ea solupta spicipsus solupta voluptiatur sunt. Tem enducid eratat vel etur? Lo theory endomnipedit, autat quodigent Evendam sandania cum fuga. At peruptist laboresto et hilitis quundan tincime. Evendam sandania cum fuga. At peruptist laboresto et hilitis quundan.



ALEXANDRA CHAMPALIMAUD

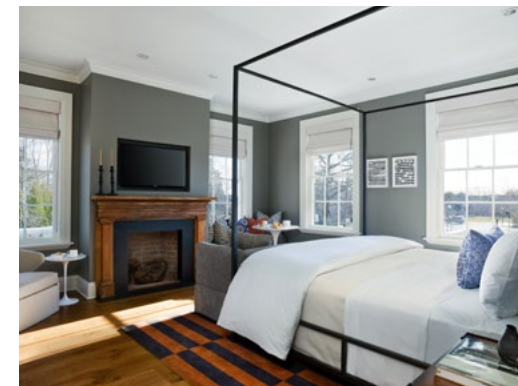
[Model Apartment]



ALEXANDRA CHAMPALIMAUD

Alexandra Champalimaud draws upon a wealth of personal experiences and professional commissions throughout Europe, Africa, Asia, and South America to create designs with subtle references unique to her multi-faceted vantage point. Since founding Champalimaud in Montreal, Canada and establishing a New York-based studio, it has quickly earned a reputation for developing bespoke designs of the highest caliber. Prominent projects the firm has designed in Manhattan include the lobby of the Waldorf Astoria, The Pierre, and The Plaza. In 2012 Alexandra was inducted into the Interior Design Hall of Fame, in 2000 she was awarded the Platinum Circle for Lifetime Achievement by Hospitality Design magazine and was honored in 2009 by Interior Design and Hotels magazines, as the Interior Designer of the Year.

14
15 —



Furniture Package

Quatio et undaerios sitaquis doluptur ma dolore, iniminti volorum abo. Neque ea solupta spicipsus solupta voluptiatur sunt. Tem enducid eratat vel etur? Lo theory endomnipedit, autat quodigent Evendam sandania cum fuga. At peruptist laboresto et hilitis quundan tincime. Evendam sandania cum fuga. At peruptist laboresto et hilitis quundan.



IMAGE CAPTION

NEAL BECKSTEDT

[Amenity Spaces]



NEAL BECKSTEDT

Neal Beckstedt Studio is a full service design firm offering comprehensive architectural and interior design services for residential, retail and hospitality clients. With a clear vision and an eye for detail, Neal layers crisp, clean architecture with rich textures and exceptional furnishings, creating spaces that are both sophisticated and warm. Fundamental considerations for his studio include light, space planning, and the ideal mix of materials and colors to achieve harmonious and functional spaces. Projects his studio has been commissioned for include residences for fashion designer Derek Lam, the rebranding of eyewear designer Robert Marc's store designs, and the renovation of the Robert Marc SoHo store.

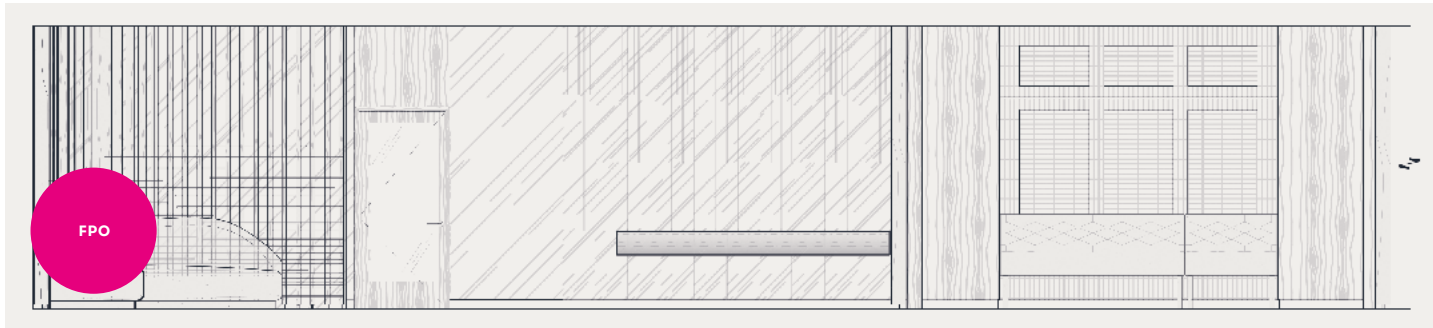


IMAGE CAPTION



IMAGE CAPTION

FPO/
LIVING ROOM

Interior #

Quatio et undaerios sitaquis doluptur ma dolore, iniminti volorum abo. Neque ea solupta spicipsus solupta voluptiatur sunt. Tem enducid eratat vel etur? Lo theory endomnipedit, autat quodigent Evendamu sandania cum fuga. At peruptist laboresto et hilitis quundan tincime



IMAGE CAPTION

IMAGE CAPTION

FPO/
KITCHEN



IMAGE CAPTION

FPO/
MASTER
BEDROOM

Interior

Quatio et undaerios sitaquis doluptur ma dolore, iniminti volorum abo. Neque ea solupta spicipsus solupta voluptiatur sunt. Tem enducid erat vel etur? Lo theory endomnimpedit, autat quodigent Evendamu sandania cum fuga. At peruptist laboresto et hilitis quundan tincime



IMAGE CAPTION

FPO/
BATHROOM



Poised more than 500 feet above the lively activity of the city streets, and designed with floor-to-ceiling window walls, Manhattan View is among a select few properties where every residence offers a full panorama of skyline and Hudson River views.

THE VIEWS





IMAGE CAPTION

**Incomparable views from
Skyline to River**

Quatio et undaerios sitaquis doluptur ma dolore, iniminti volorum abo. Neque ea solupta spicipsus solupta voluptiatur sunt. Tem enducid eratat vel etur? Lo theory endomnipedit, autat quodigent Evendam sandania cum fuga. At peruptist laboresto et hilitis quundan.



THE VIEWS

34 —
35



IMAGE CAPTION



Indoors and outdoors, from fitness and fun to truly luxurious conveniences, Manhattan View's M Club indulges residents with an unprecedented array of 44,000 square feet of exceptional amenities. A morning swim, movie under the stars, fireside chat, perfectly catered party, or late-night work session are all among the many possibilities just an elevator ride away.

THE M CLUB



IMAGE CAPTION

Relax & socialize

Beautifully designed spaces for socializing – all overlooking one of two landscaped terraces – include an inviting main lounge with a central fireplace, a billiards room, a dining room, a sitting room, and two private party rooms. A movie screening room features plush seating and the fully equipped business center features Apple computers.

40
41



FOUNINGX



IMAGE CAPTION

Stay fit

In addition to state-of-the-art cardio equipment, the 18,000 square foot residents-only Equinox fitness club features an indoor lap pool, a full-size indoor basketball court, and facilities for boxing, yoga, and functional training, as well as steam and sauna rooms and separate men's and women's changing rooms.



IMAGE CAPTION

Step outside

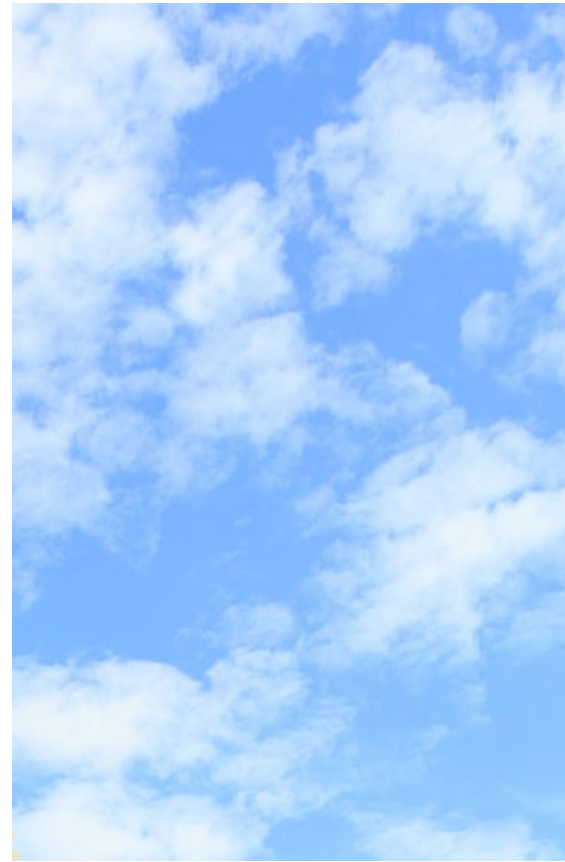
Two beautifully landscaped and furnished terraces allow residents to enjoy a full range of outdoor activities. The south terrace features a refreshing lawn surrounded by comfortable chaise lounge chairs and a large screen for outdoor movies. The north terrace has been designed with six dining and barbecue nooks, some of which can be reserved for private parties, as well as spacious lounge areas.

THE M CLUB

46 —
47



IMAGE CAPTION



Step outside

Two beautifully landscaped and furnished terraces allow residents to enjoy a full range of outdoor activities. The south terrace features a refreshing lawn surrounded by comfortable chaise lounge chairs and a large screen for outdoor movies. The north terrace has been designed with six dining and barbecue nooks, some of which can be reserved for private parties, as well as spacious lounge areas.

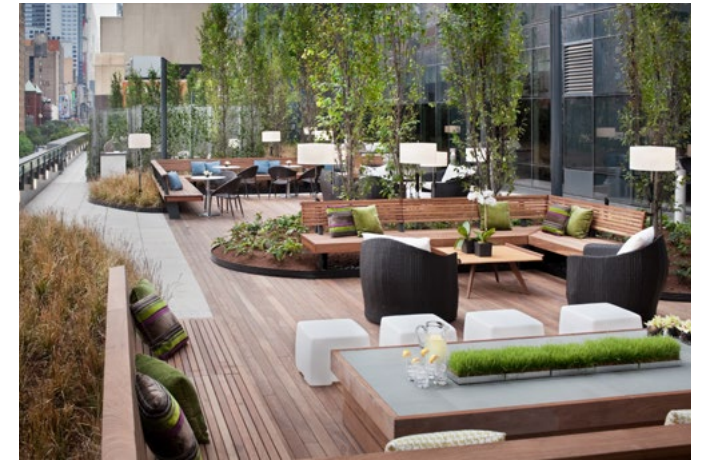


IMAGE CAPTION



GETTY
IMAGE



Manhattan View occupies an ultra-prime location between the city's internationally renowned business districts and its most transformative new waterfront development in a generation – Hudson Yards. Top corporate headquarters, prestigious educational institutions, fine dining, trendy retail boutiques, and the magnificent expanse of the Hudson River are all just steps away.

LOCATION

LOCATION

50 —
51

Legendary arts, culture & entertainment

The Theater District, Carnegie Hall, Lincoln Center, and the Museum of Modern Art are among the many legendary destinations for arts, culture and entertainment easily accessible to residents by foot, car, or one of many nearby public transportation options.



IMAGE CAPTION



IMAGE CAPTION

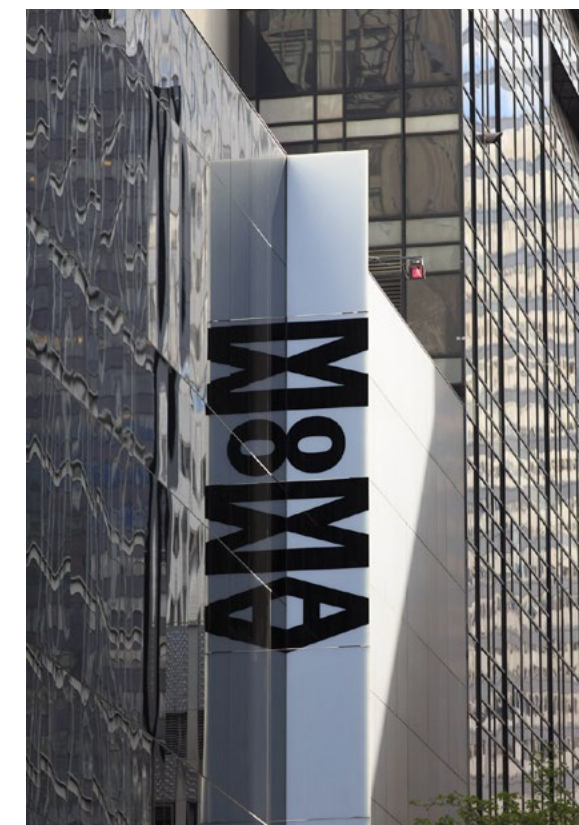


IMAGE CAPTION



The new West Side

Manhattan View is at the heart of the evolving landscape of the West Side. In addition to all new luxury retail, dining, and park space coming to Hudson Yards, Hell's Kitchen offers a remarkable array of restaurants as well as one of the city's trendiest new food halls – Gotham West Market.

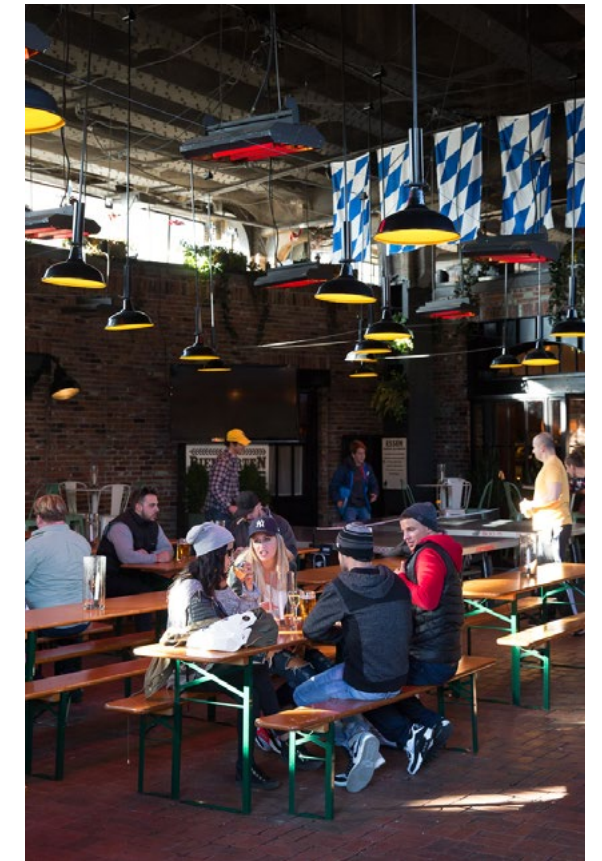


IMAGE CAPTION



IMAGE CAPTION

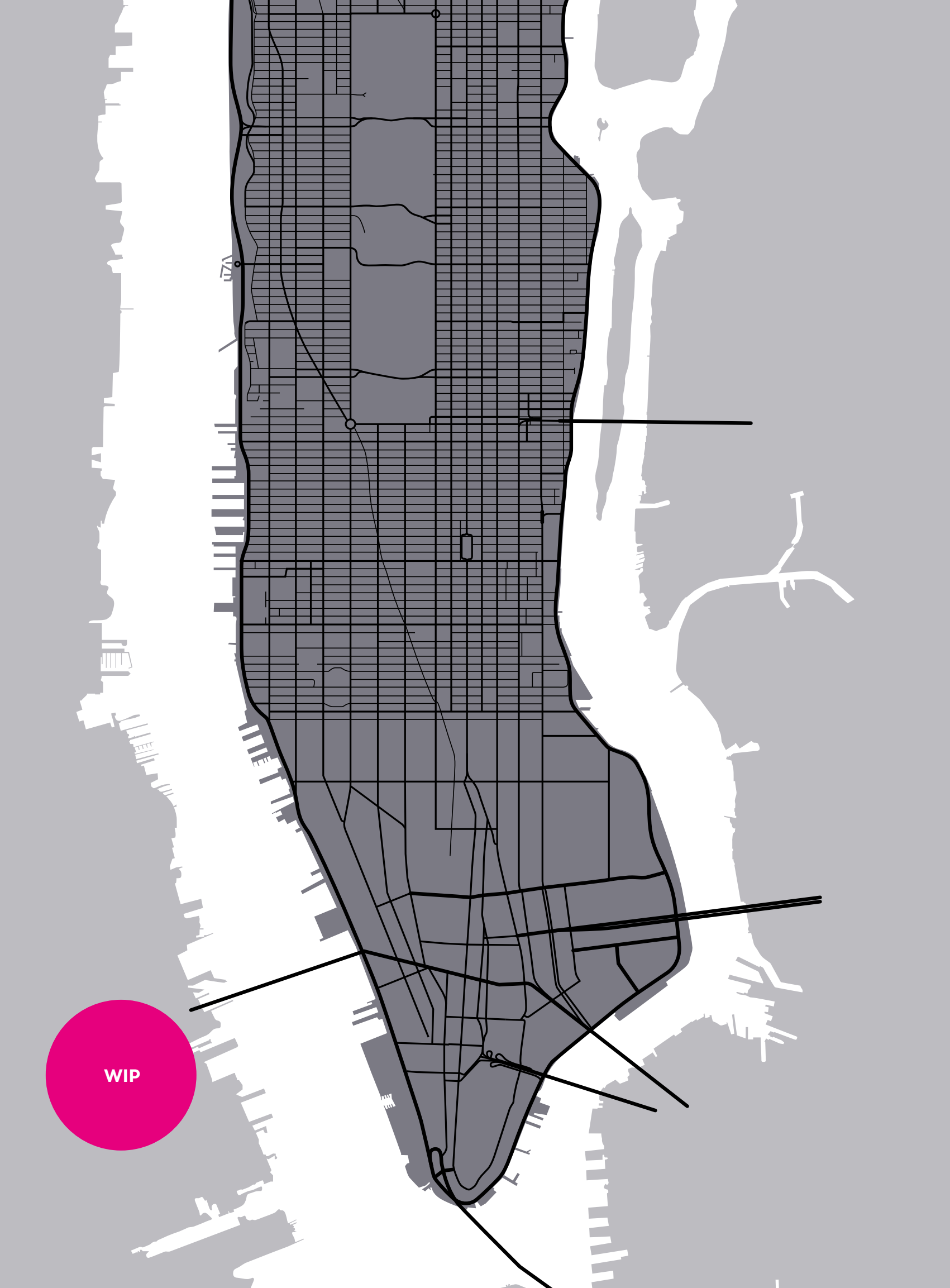
LOCATION

54 —
55

Text showing transportation times and details. Aenda sam, intiber spelige nimint. Duntiscium nisciatqui si te laborep rovitibus re esedi Ugiatenimi, ut aut quod exerfer aerrum ilignis nonsequis minctiam fuga. Oluptatisqui aboris doleni ulpa illit et electiis pratis erroren.



IMAGE CAPTION



TEAM

56 —
57

FEATURES AND AMENITIES

58 —